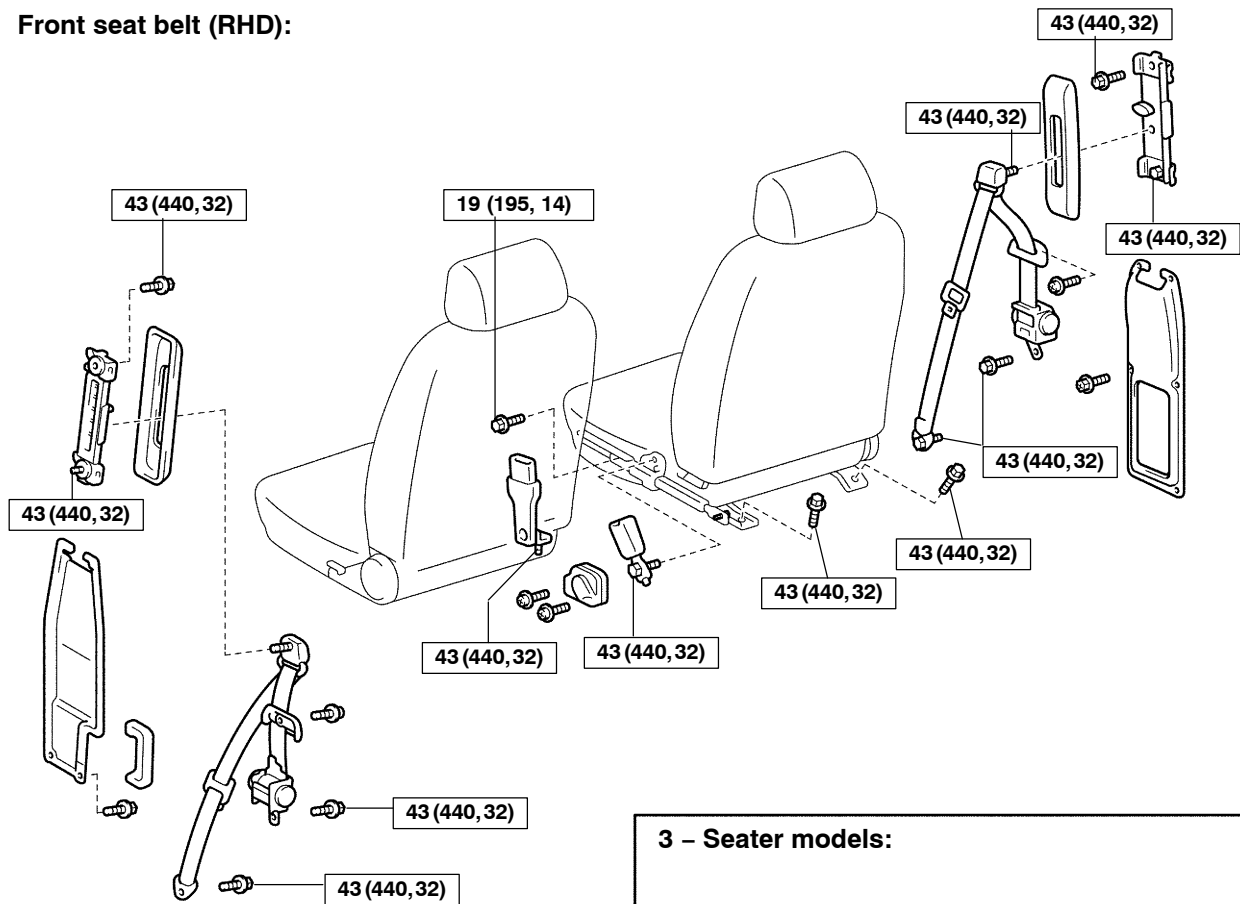


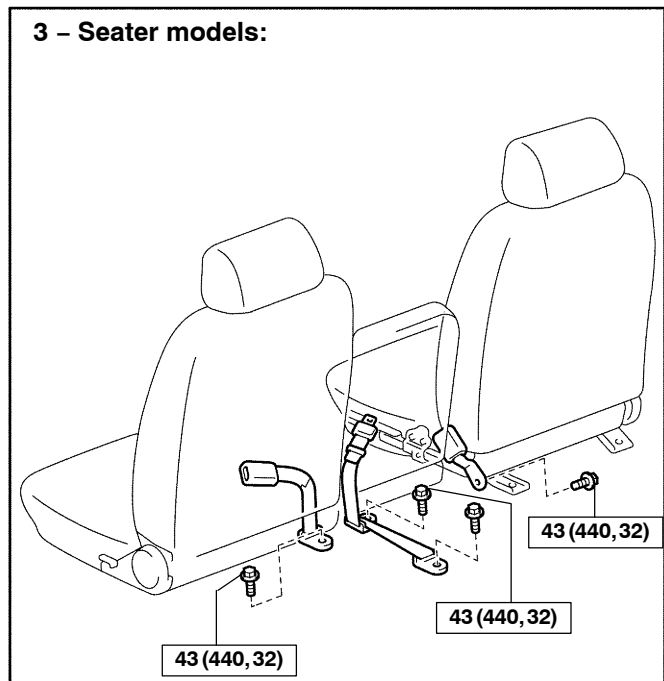
# SEAT BELT COMPONENTS

BO328-01

Front seat belt (RHD):



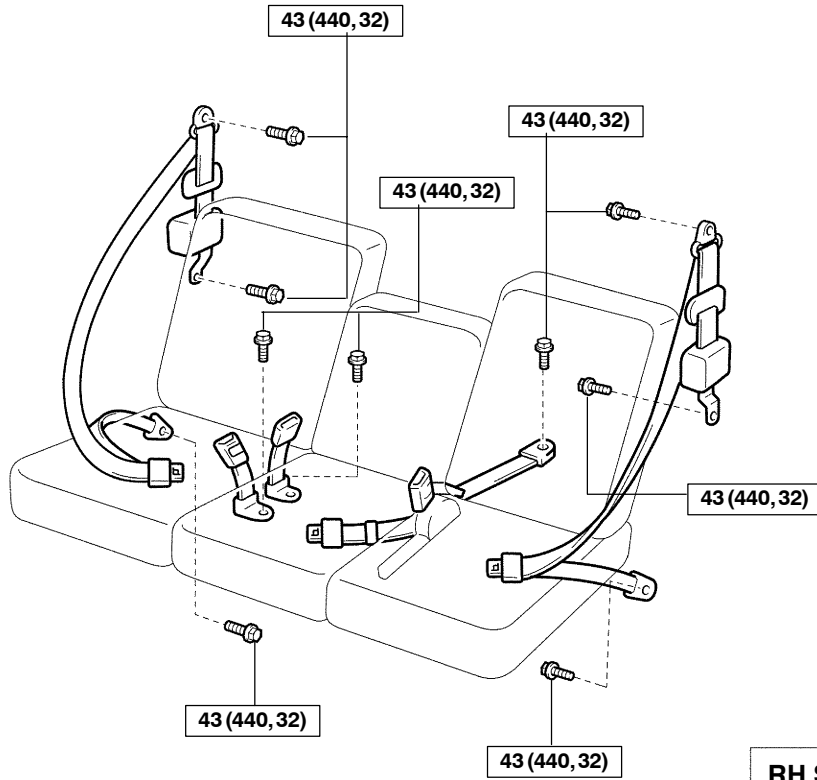
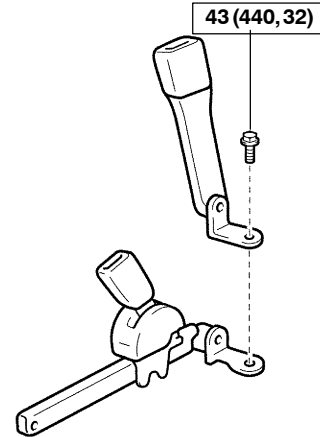
3 - Seater models:



N·m (kgf·cm, ft·lbf) : Specified torque

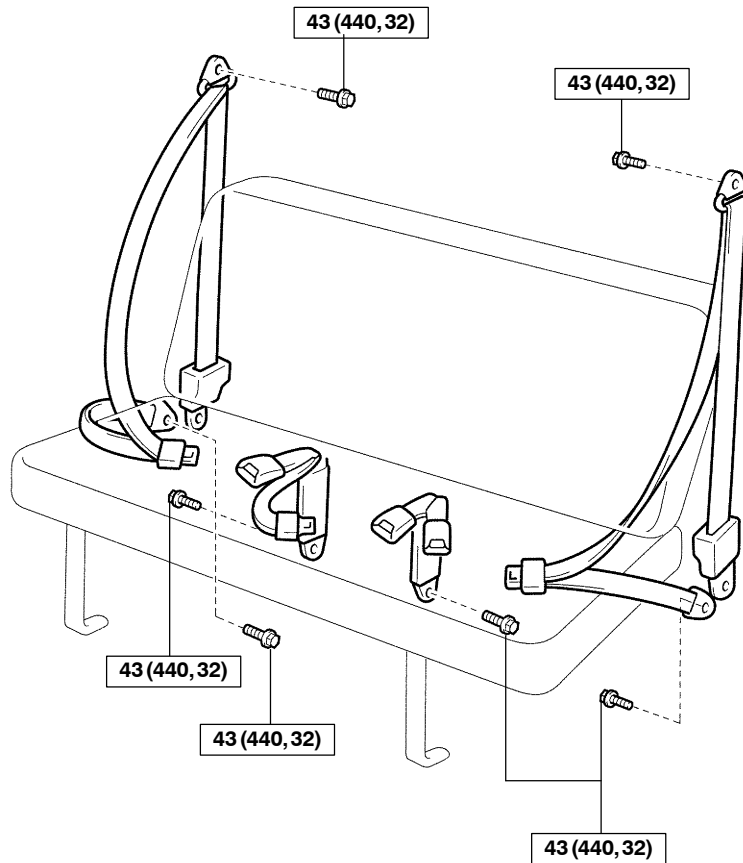
P

H13506

**Front seat belt (LHD):****RH Side inner belt:**

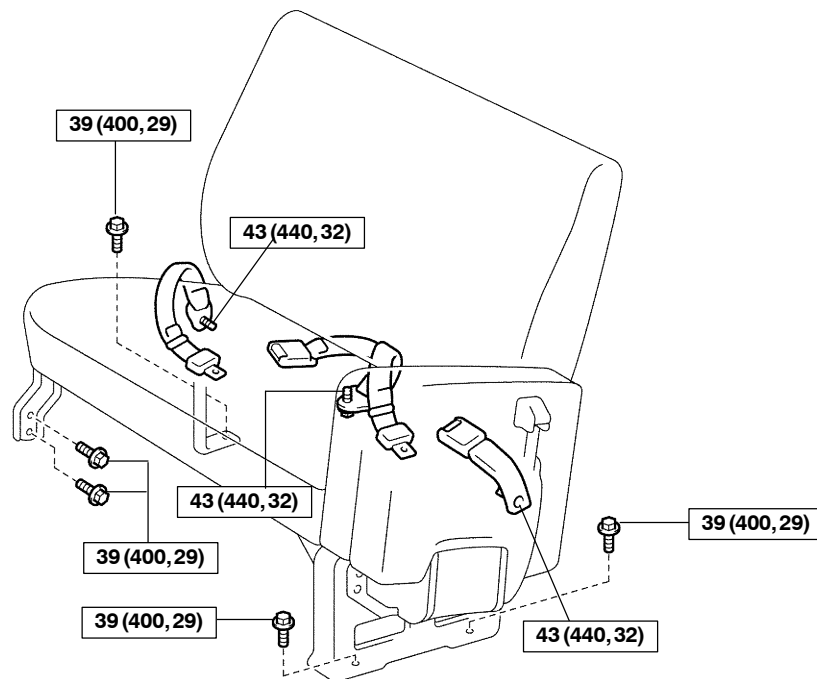
N·m (kgf·cm, ft·lbf) : Specified torque

## New Zealand, 3/6 Seater models:



P

**Commuter:**  
**Rear No. 1, No. 2 and No. 3 seat belt:**



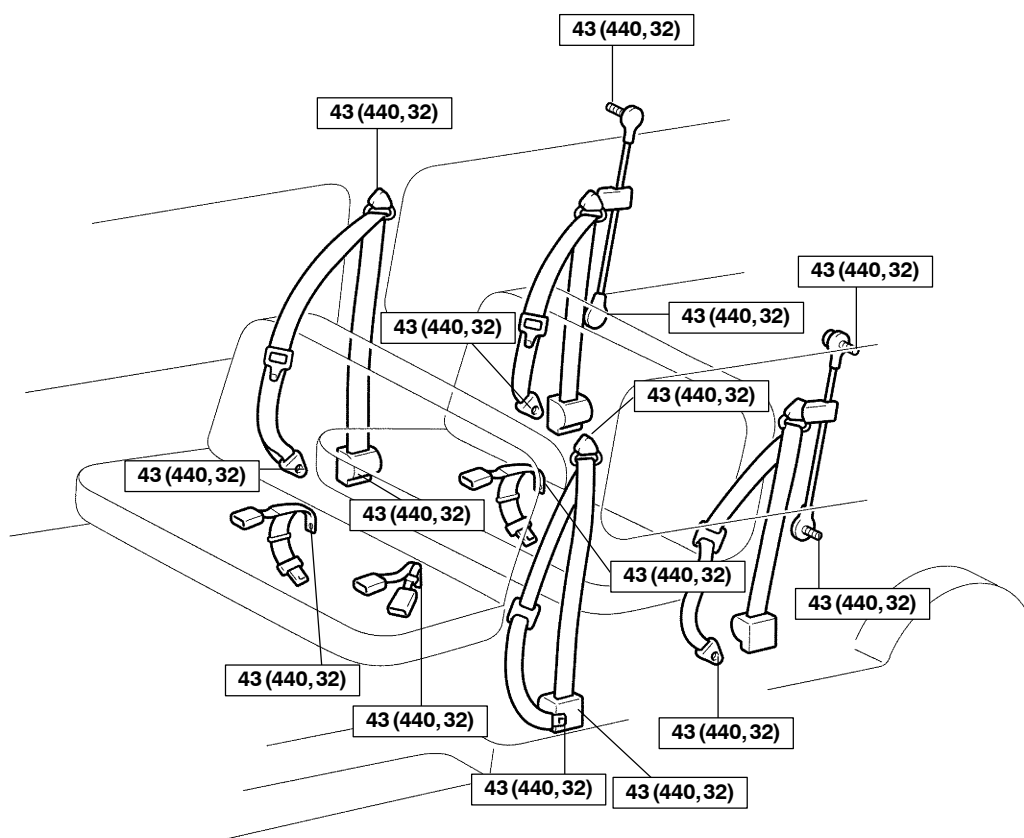
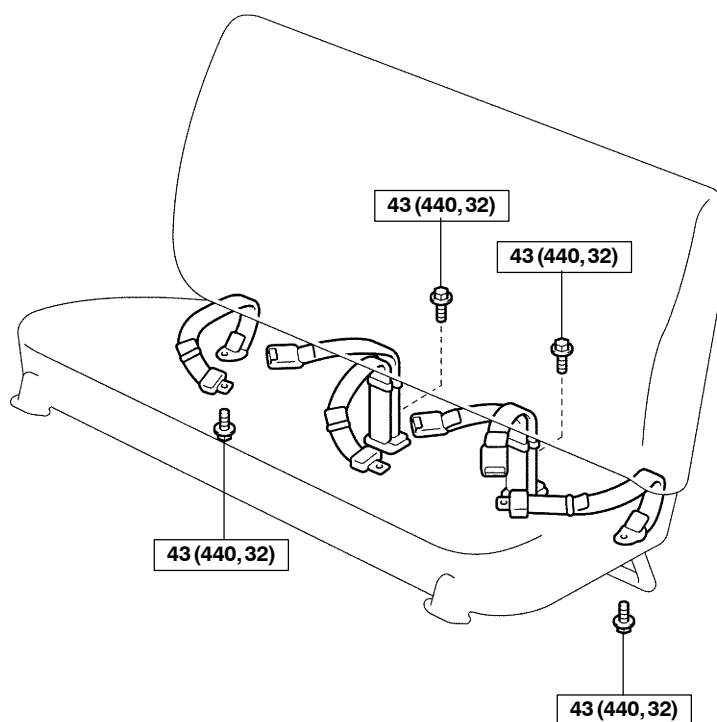
H13508  
H13509

N·m (kgf·cm, ft·lbf) : Specified torque

P

H14358

**Commuter:**  
**Rear No. 4 seat belt:**



H13510  
H13511

N·m (kgf·cm, ft·lbf) : Specified torque

H14359